

Dessiner la doublure d'une veste ou d'un manteau

Tuto by ☀️n sunday mornings

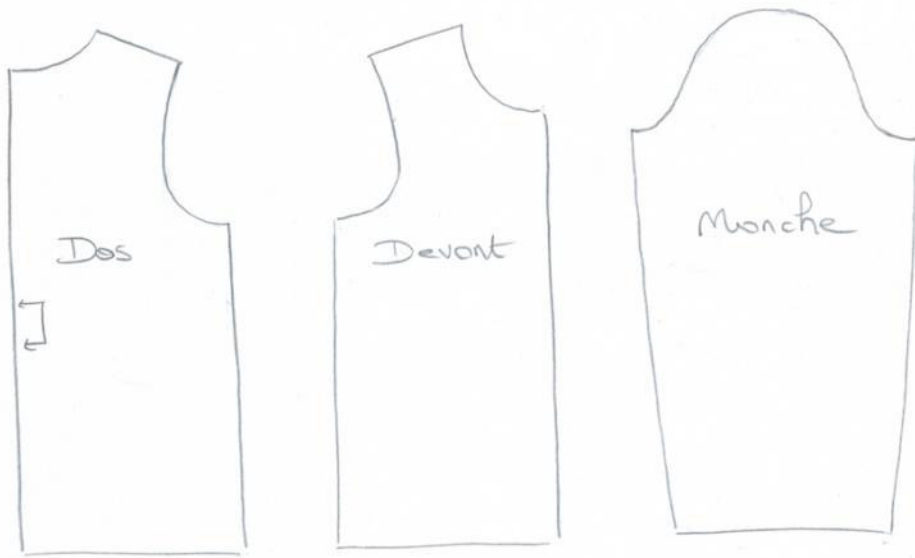


Méthode sans plis

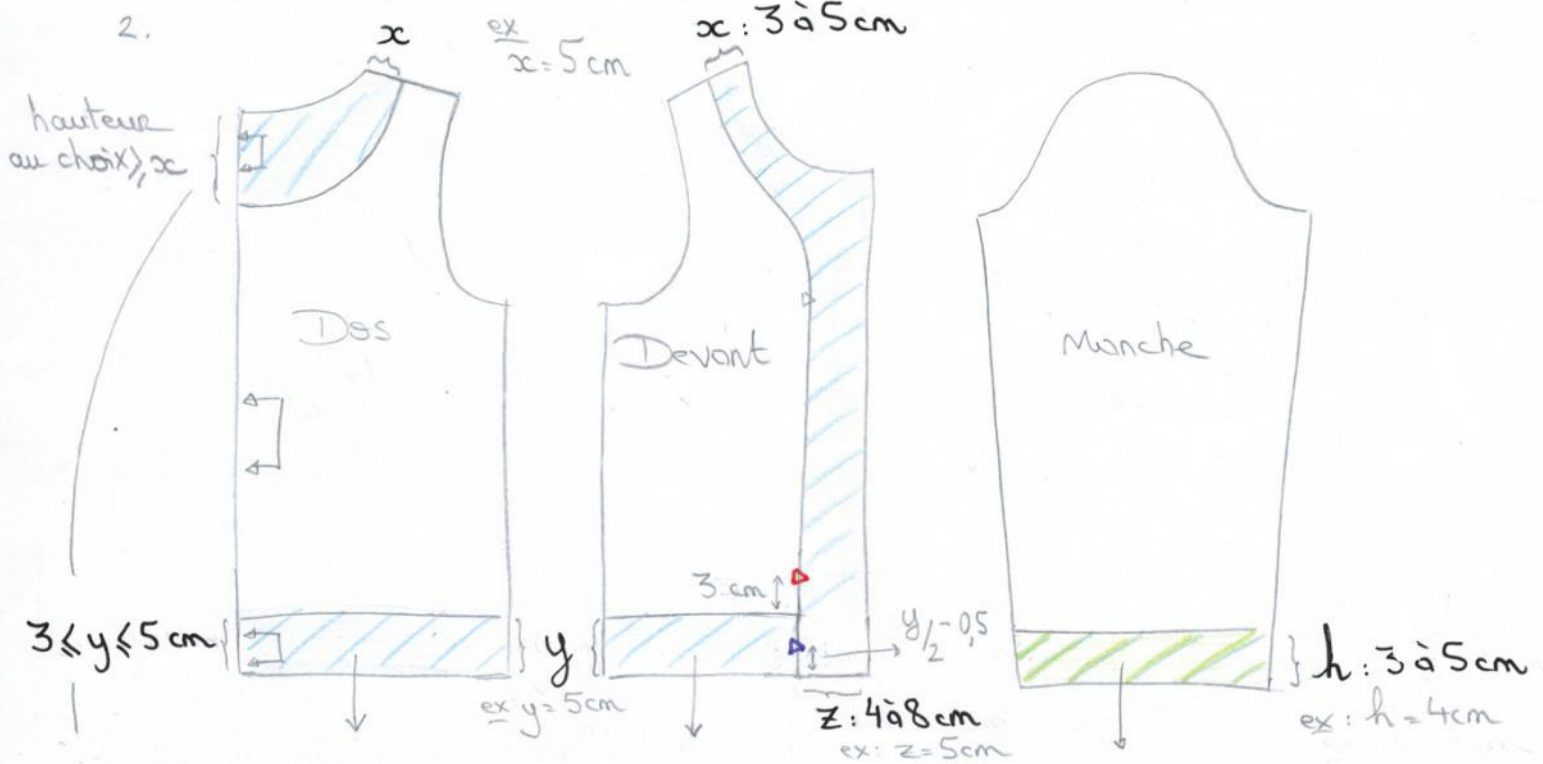
Remarque

Ce tutoriel s'appuie sur un patron de vêtement sans marges de couture ni valeur d'ourlet.

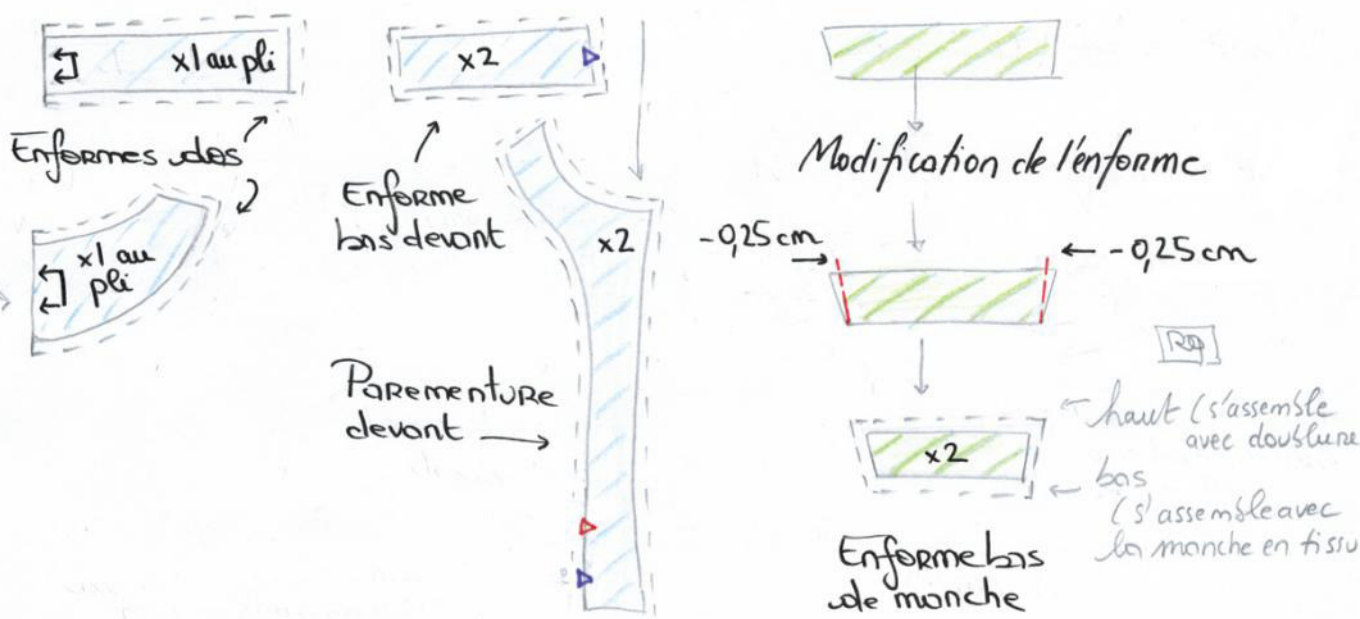
1.



2.

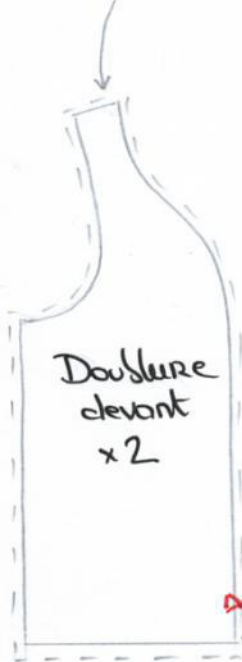
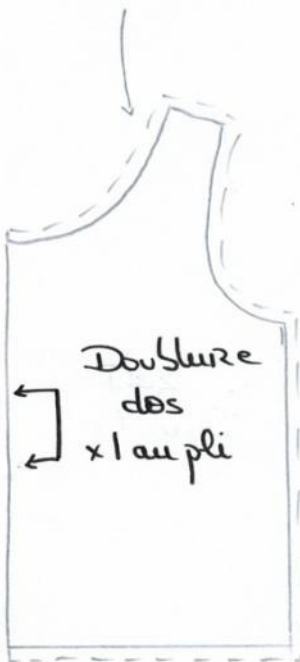
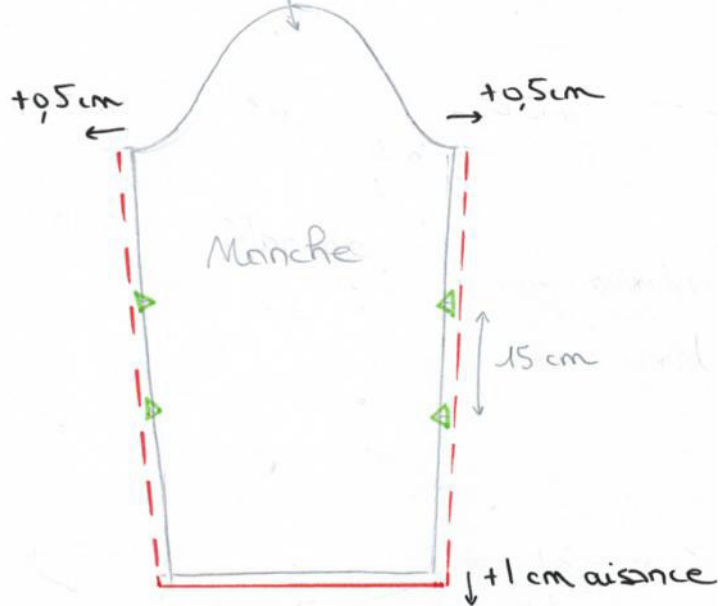
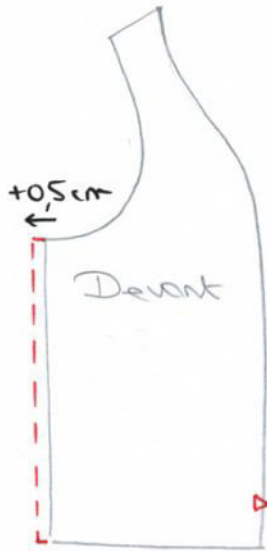
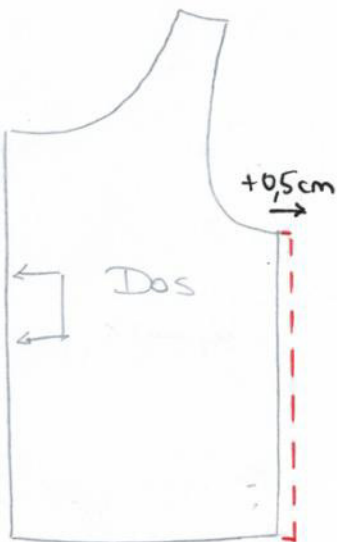
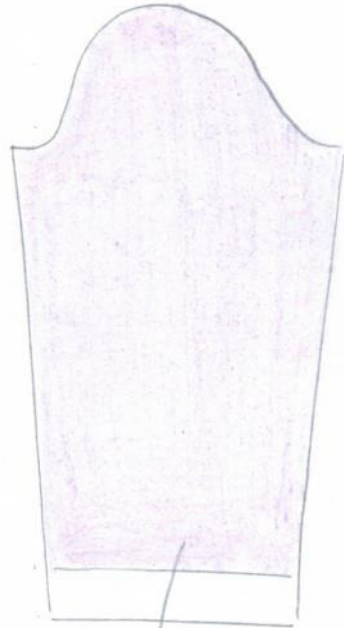
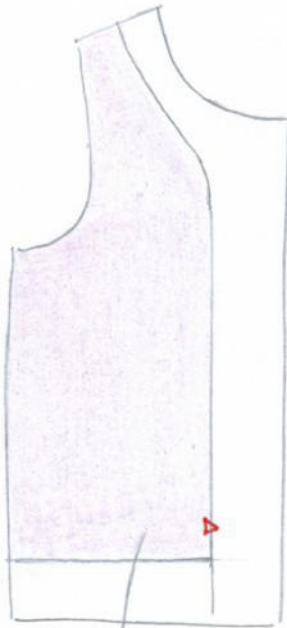
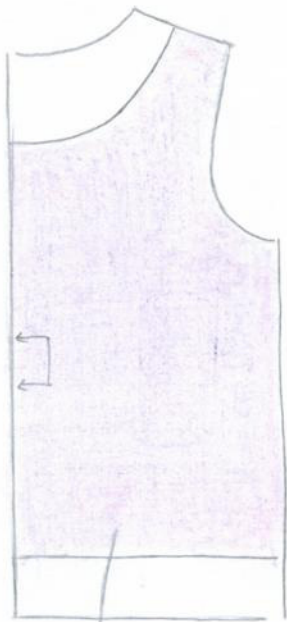


3.



- ▶ cran montage doublure devant + parementure devant
- ▶ cran montage parementure + enforme devant

4.



▷ crân ouverture manche pour retournement